

**General Assessment Report on Teaching and Learning, as well as Academic Staff  
Evaluation by Students for the Academic Year 2022/2023  
Quality Assurance Office**

## 1. Introduction

Based on the Quality Assurance Regulation of Tempulli Academy, the Evaluation of Academic Staff and Courses by students for the academic year 2022/2023 has been conducted to gather their perspectives on all aspects of teaching and learning at Tempulli.

As part of this process, an online questionnaire has been distributed through SEMS (Student Electronic Management System), which is an electronic system used for continuous assessment of specific participants, for whom specific questionnaires are created.

This system provides the capability to create a questionnaire with diverse questions, targeting a specific group of users (management, professors, students, etc.) who have the opportunity to respond to the respective questions. Subsequently, the system generates statistics based on the provided answers.

Therefore, SEMS ensures that it does not retain any trace of the answers provided by each user to all questions. Thus, all users are secure in providing any answers they offer, as we guarantee that the system is 100% anonymous and secure. Students cannot proceed in SEMS without completing the assessment forms for each registered course of the winter semester.

## 2. Methodology of Questionnaire Analysis:

The analysis of the questionnaires will be conducted in three phases:

- General phase, where teaching and learning will be analyzed across all study programs.
- Intermediate phase, focusing on individual courses and professors at the program level.
- Final phase, involving the distribution of results and feedback reception.

## 3. Presentation of Results

This report presents the quality assessment by students in the BA Insurance and Accident Damage Management, BSc Traffic and Transportation Engineering, and MSc Traffic Engineering and Road Safety programs, divided into three parts. The first part of the report presents a summarized assessment of the program and academic staff. The second part of this report provides a detailed description and assessment of the BA Insurance and

Accident Damage Management, BSc Traffic and Transportation Engineering, MSc Traffic Engineering, and Road Safety programs in terms of teaching and learning. The third part presents general and individual evaluations of staff and courses.

The questions for this session were primarily constructed in the form of statements, and their assessment was conducted according to the Likert scale (1 - Don't know; 2 - Strongly disagree; 3 - Partially agree; 4 - Agree; and 5 - Strongly agree).

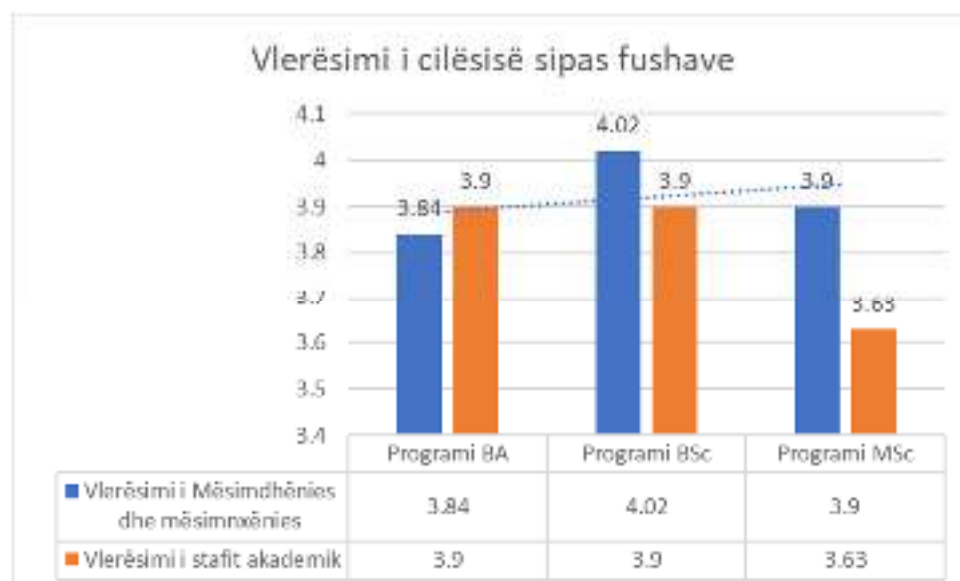
### 3.1. Raporti i përmbledhur i vlerësimit të cilësisë

From the summarized report presented in Table No. 1 within the context of program assessment, particularly in teaching and learning, referring to the table, it is evident that the result is satisfactory for all three academic programs at Tempuli.

Table No. 1 Quality Assessment by Fields

Teaching and Learning

Fushat e vlerësimit	Programi BA	Programi BSc	Programi MSc
Assessment of Teaching and Learning	3.84	4.02	3.9
Evaluation of Academic Staff	3.9	3.9	3.63



### 3.2. Program Assessment Report for the Academic Year 2022/2023

The program assessment was conducted through questionnaires divided into 2 sessions:

- Teaching and Learning
- Evaluation of Academic Staff

The Assessment of Teaching and Learning comprises 19 components. Typically, this assessment is conducted once within an academic year and is evaluated by students of the respective program. Additionally, the evaluation session of staff and courses is conducted twice a year, or every semester.

The questions for the two sessions were primarily structured in the form of statements, and their evaluation was done using the Likert scale (1 - Don't know; 2 - Strongly disagree; 3 - Partially agree; 4 - Agree; and 5 - Strongly agree). The results of these assessment sessions are presented in this report through tables No. 2 and 3.

Table No. 2 Teaching and Learning Evaluation

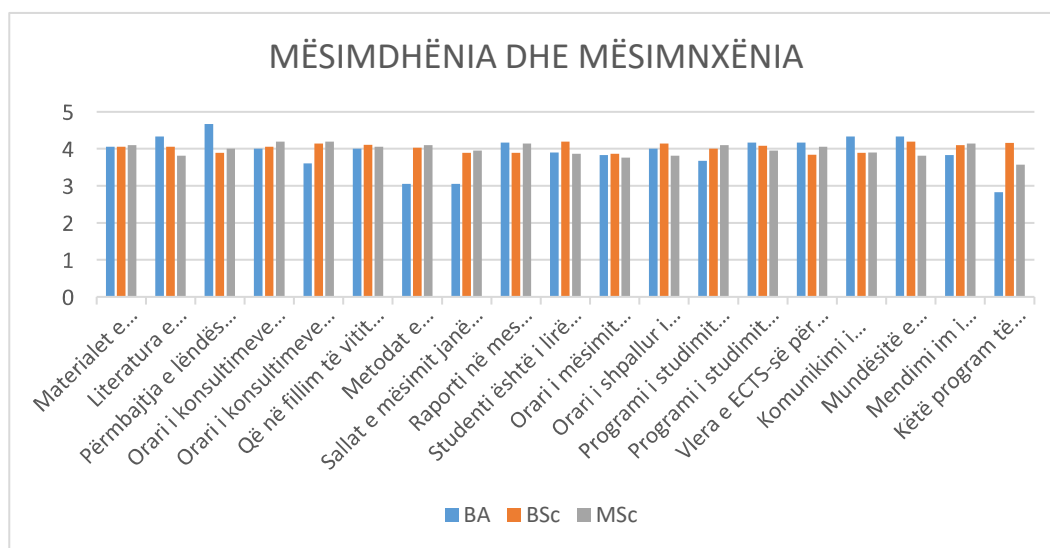
Teaching and Learning	BA	BSc	MSc
The materials presented during lectures are provided to us regularly.	4.5	4.05	4.1
Recommended literature for the subjects is made known to us at the beginning of the semester.	4.33	4.05	3.81
The content of the course (syllabus) is distributed to us in a timely manner.	4.67	3.89	4
The schedule for consultations with professors is announced.	4	4.05	4.19
The schedule for consultations with professors is respected.	3.67	4.14	4.19
At the beginning of the year, we are informed about the assessment method for the respective subject.	4	4.11	4.05
Teaching methods are contemporary.	3.5	4.03	4.1
The classrooms are well-equipped with audio-visual tools to facilitate learning.	3.5	3.89	3.95
The balance between theoretical and practical parts of the courses is adequate.	4.17	3.86	4.14
The student is free to choose elective courses.	3.9	4.19	3.86
The class schedule is announced in advance.	3.83	3.86	3.76
The announced class schedule is respected by the instructors.	4	4.14	3.81
The study program is up-to-date with developments in this discipline of study.	3.67	4	4.1
The study program is comparable to similar programs at other universities.	4.17	4.08	3.95
The ECTS value for each subject is calculated according to the student workload.	4.17	3.84	4.05
Communication between program coordinators and students is at an appropriate level.	4.33	3.89	3.9
Employment opportunities after graduation are known.	4.33	4.19	3.81
My overall opinion of this study program is positive.	3.83	4.1	4.14

I would recommend this study program to others

2.83

4.16

3.57



Based on the assessment results from the Teaching and Learning session presented in Table No. 2, we observe that all components of this session in all three study programs have been rated by students above 3, except for the component "The balance between theoretical and practical parts of the courses is adequate," which has a satisfactory rating but not maximal. This issue will be addressed within the 2023/24 academic year, where the Academy will equip itself with modern laboratories to serve students in completing the practical part in almost all subjects.

Table No. 3 Evaluation of the respective staff and courses

Komponentët e vlerësimit	Programet e studimit		
	BA	BSc	MSc
<b>1. The course syllabus, including content and assessment methods, was presented adequately at the beginning of the semester.</b>	4.25	3.68	3.3

<b>2. The instructor's presence during the semester has been consistent.</b>	4.54	4.06	3.93
<b>3. The instructor has always come prepared for classes.</b>	3.95	3.96	4.29
<b>4. Activities during the semester have provided opportunities for students to engage in discussions and student interaction (group work) has been encouraged.</b>	4.09	3.93	4.0
<b>5. The instructor has been available to students for consultations.</b>	3.83	4.05	3.98
<b>6. The instructor encourages diverse opinions from students and respects them.</b>	4.38	3.94	3.92
<b>7. The materials provided for studies during the semester have been suitable for acquiring knowledge and skills outlined for this subject.</b>	4.04	4.02	3.85
<b>8. Evaluation of students' work for the subject has been continuous throughout the semester and not just in the final exam.</b>	4.0	4.02	4
<b>9. Students have been informed in advance about the assessment criteria for their assignments or their work in general.</b>	4.38	4.06	4.01
<b>10. The means of concretization (lectures, exercises,</b>	3.94	4.01	4.14

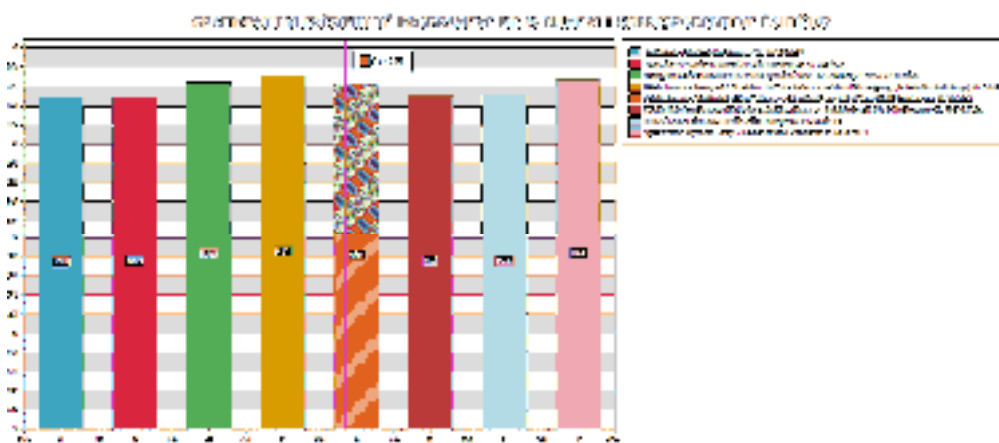
seminars, consultations, colloquiums) and the learning space have been sufficient and available.			
11. The subject has been successful and beneficial for students.	4.14	3.96	4.0
12. Evaluation of students' work for the subject during the semester has been conducted according to the respective syllabus.	3.9	4.02	4.0

Based on Table No. 3, we see that we have good and acceptable results, and the aim will be to achieve average ratings of 3, with detailed addressing next year to reach 4.

### 3.3. General Conclusion

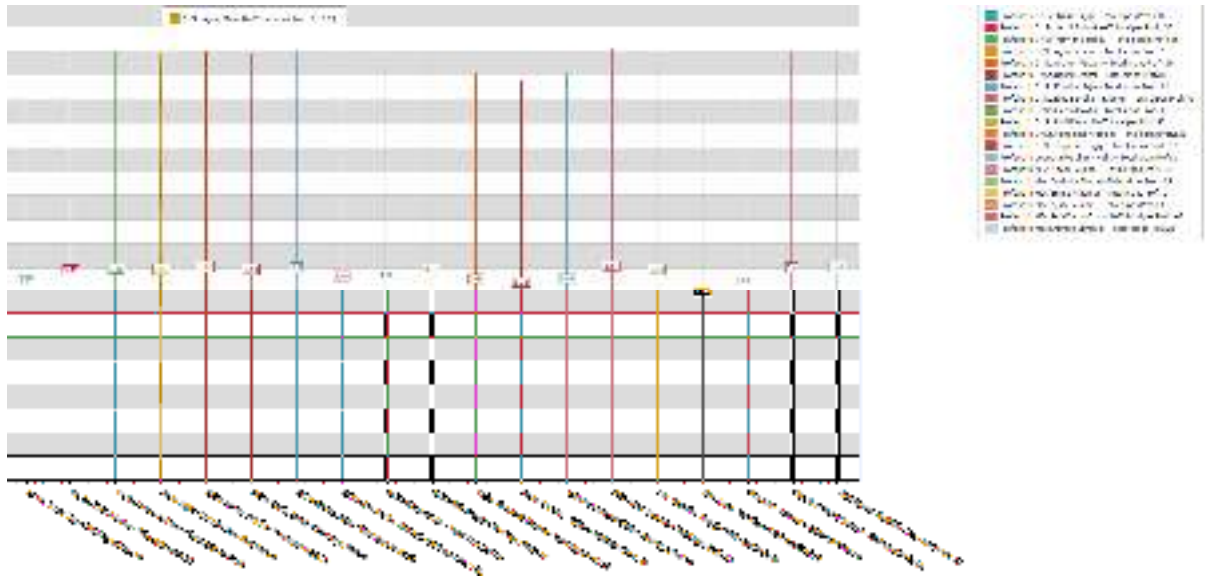
The assessment results at the overall level in Temple Academy for the winter and summer semesters of 2022/2023 are satisfactory, with an average score above 3, across all programs and specializations.

Table No. 8. Program assessment chart in percentage (%)



Regarding the evaluation of professors, in general, the overall assessment throughout the winter and summer semesters, including all levels of study, is above the score of 3, which is a satisfactory result.

Tabela nr.9. General assessments of the staff



Regarding the evaluation of courses, generally, the overall assessment in all courses throughout the winter and summer semesters, including all levels of study, is above the score of 3, which is a satisfactory result..

Tabela nr.10. Vlerësimet e përgjithshme të lëndëve

